



Hertfordshire
Community
Foundation

Funding Local Causes

Annual Review | 2021/22



A new look for HCF

You may have spotted that HCF has undergone a makeover. With the help of our trustees, staff and some supporters we have developed and adopted a new brand design which better reflects the values of HCF as a trusted, approachable, knowledgeable and professional partner.

Our name remains the same but our rebrand signals our desire to engage new audiences with our work and local giving. Our thanks go to Right Angle Creative for their generosity and creativity (and patience!) in developing our new look.

About us

Hertfordshire Community Foundation makes local giving easy. Through our expert knowledge, we identify areas of greatest need in the county and give vital support to small charities working to improve the lives of vulnerable people. Donations from individuals, families and businesses enable HCF to support local causes that matter.

Contents

● Welcome	4
● Understanding our county's challenges	6
● A framework for making lasting change happen	7
● 2021/2022 in numbers	9
● Looking back on 2021/2022	12
● Case studies	17
● Why give through HCF	21
● How to give	24
● Financial overview	25
● With thanks to	28
● Our people	31

Welcome from the Chair and Foundation Director



Helen Gray
Foundation Director

Helen Gray



Henry Holland-Hibbert
HCF Chair

Henry Holland-Hibbert

While there has been a period of consolidation in the wake of the pandemic, HCF increased its grant making during 2021/22 to a record £3.9m - an increase of 72.19% (£1.66m) on the previous financial year.

This is the fourth consecutive year in which HCF's grant making has exceeded £1m. This reflects significant need in the county as the ongoing impact of the pandemic is felt and it also reflects the addition of several major pass-through funds, notably from Hertfordshire County Council.

Regrettably, as the impact of Covid-19 began to abate we were acutely aware that the first energy price cap increase in April 2022 would stretch local families and individuals who were already struggling to make ends meet. HCF will continue to monitor this situation and through programmes such as HCF's Children's Fund and HCF's Winter Appeal, grants will be available to local children and families to ensure their most basic needs can be met.

Although HCF's grant making has grown over recent years, much of this funding is temporary and may not be sustainable in the medium to long term. As a result, a key priority for HCF remains to grow its endowment fund. Through growth in the endowment HCF will be able to

secure growth in grant making. Events over the past few years have highlighted the importance and value of community foundations around the globe and we have a duty to help those in greatest need here in Hertfordshire.

HCF's ability to make an impact in the county is the result of an extraordinary team effort by a group of dedicated staff, volunteers, generous donors and a thriving charitable sector. Our gratitude goes to everyone for helping to make Hertfordshire a better county for everyone.



Liberty Tea Rooms and Community Hub – a community café providing ‘pay what you can’ catering and a range of advice services to the local community including debt management

Understanding our county's challenges

HCF's grant making strategy and philanthropy advice is underpinned by an in depth knowledge of the local voluntary sector. Below we hear about some of the challenges facing local grass root organisations and their beneficiaries.

Youth mental health

"There has never been a more challenging time to grow up - as more local young people find themselves struggling with their mental health and emotional wellbeing. Demand for our free, confidential counselling service has reached unprecedented and worrying new heights. We have a mountain to climb in the coming months and years to ensure we can continue to be there for those young people who need us now and in the future.

My thanks go to HCF for providing vital support so that we can continue to help young people in their time of need."

David Barker, CEO, Youth Talk

Cost of living advice

"Citizens Advice East Herts provides free, confidential, non-judgemental and impartial advice. Our advice is delivered via phone, email, video, webchat and in person (including home visits). Our support is wide-reaching and includes providing advice on debt, benefits, housing, employment, relationships and utilities.

We are advising an increasing number of people on the cost-of-living crisis particularly around energy debts, local foodbank referrals and accessing charitable support despite Government support. People's problems are increasingly more complex, taking longer and more resources to resolve. This is at the time when locally our funding has been cut and the fundraising environment is more challenging. Funding opportunities from Hertfordshire Community Foundation really make a difference to our ability to continue to help local people."

Laura Hyde, Chief Executive, Citizens Advice East Herts



Herts Community Kitchen

Suicide prevention

"Hector's House is a small suicide prevention charity operating in Herts and Bucks. Since 2020, we have seen a sharp increase in the need for mental health services, with many people unsure where to turn to. We provide a compassionate listening ear, tailored signposting and crisis support for every individual who comes to us. We also deliver mental health presentations to schools free of charge to ensure young people in Herts know how to stay well during these ever-challenging times.

This would not be possible without the funding from organisations like Hertfordshire Community Foundation as we receive no set income for the work we do. Thanks to HCF, we've been able to save countless lives and support a number of families who are looking after suicidal loved ones in Herts. We are incredibly grateful."

Sarah O'Brien, Support & Operations Lead, Hector's House

Financial advice

"With the support of HCF, Stevenage Credit Union provided online access to our members from the safety of their own homes during the pandemic, thanks to further HCF grants we are able to continue offering this online function at a time when it is needed more than ever. Many of our members are struggling to pay for bills and groceries and are having to use savings or take out loans to pay for essentials."

Anne Slade, Stevenage Credit Union

"My thanks go to HCF for providing vital support so that we can continue to help young people in their time of need."

David Barker, CEO, Youth Talk

A framework for making lasting change happen

In addition to the 7 themes highlighted in our Hertfordshire Matters Report, HCF has adopted the United Nations Sustainable Development Goals (UN SDGs).

These goals underpin the aims of the UN to alleviate poverty and increase sustainability on a global scale.

There are 17 UN SDGs which have been designed so that activity can be undertaken at various scales with local action contributing towards both local and global outcomes. Furthermore, they capture the essence of community foundation activity and align with our vision to drive philanthropy and collaboration across communities to enable meaningful and sustainable change.

Throughout this report we have identified projects and initiatives that are contributing towards the following goals. **Please keep an eye out for the UN SDG emblems.**

- Along with other community foundations across the UK, HCF is adopting the UN SDGs to complement its grant making and training activities, and to support operational culture.

HCF is committed to a sustainable future and we are working hard to achieve this within our organisation and beyond. Adopting the UN SDGs is just one part of our commitment.



See above:

HCF has selected six of the SDGs to focus on, prioritising those that best align to our grant making activities.

Tring Together – a local charity that brings the community together by involving community groups, business and residents



2021/2022 in numbers

Thanks to the generosity of our new and existing donors we were able to:



Award **£3,850,091** in grant support, the 4th consecutive year in which grants awarded exceeded £1m



Offer 1:1 advice and guidance to **29** organisations through our team of advisors

Deliver our fifth Building Effectiveness strategic development programme supporting **10** organisations



Provide **694** grants to groups and organisations



Support **27** tutors who gained a Level 3 Award in Education & Training

Reach and support in excess of **100,000** beneficiaries

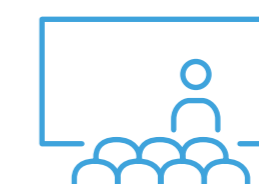


Provide **202** grants to individuals and families living in crisis

Provide **37** courses training **368** attendees



Train **10** trustee boards in **100** hours of 'Better Boards' workshops



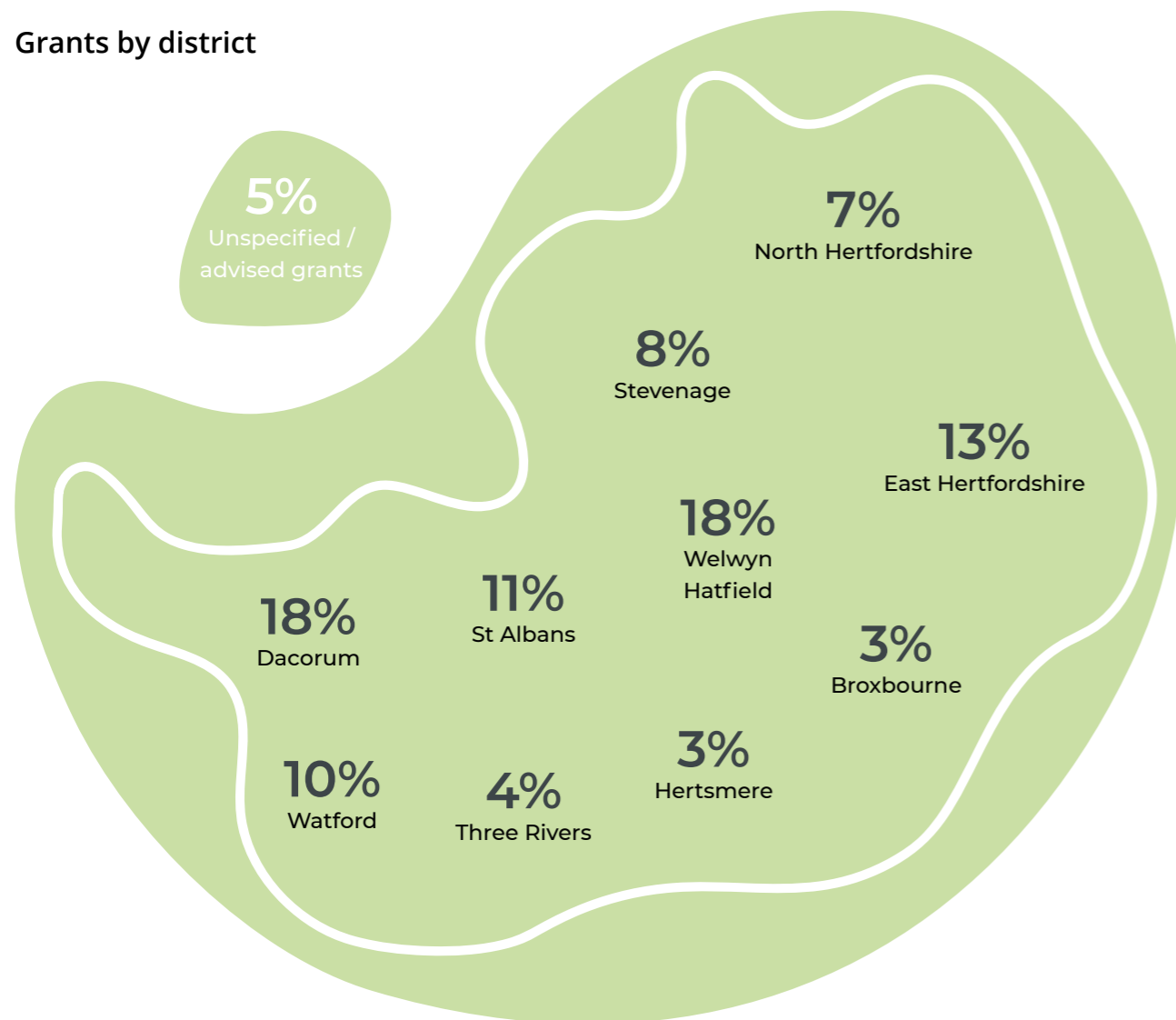
Train **342** individuals in safeguarding adults at risk over **23** courses

2021/2022 in numbers (continued)

Grants by size



Grants by district



2021/2022 in numbers (continued)

Grants by theme



DS Achieve, provide early support to children with Down Syndrome so they can maximise their future potential



Looking back on 2021/2022



London Marathon

Nine brave people took part in the London Marathon and four completed the virtual marathon on behalf of HCF. The team, including HCF volunteer Nick Powlesland and his son Matt pictured, raised over £20,226. If you would like to run the 2023 London Marathon for HCF please call 01707 251351 or email office@hertscf.org.uk to register your interest.

Hertfordshire Children's Fund

In 1996 HCF launched the Hertfordshire Children's Fund, thanks to the generosity of Johanna Mason, Caroline McCaffrey and some friends who collectively donated their child benefit.



Munden Estate Annual Reception

25 years on and the fund has awarded over **£270k** helping thousands of local children and families in crisis. Thanks to the foresight of Johanna and Caroline HCF continues to help a growing number of families to purchase essential household items including children's beds, washing machines and ovens. From families fleeing domestic abuse to children living in extreme poverty, HCF's Children's Fund awards modest grants of up to **£300** which have a huge impact.

Children's Fund celebrates 25 years of support.

In 2021/22 the fund supported 202 families compared to 146 in 2020/21 - reflecting a huge increase in demand for support. If you would like to help local families in need please consider supporting HCF's children's fund.

Annual reception

Munden Estate provided a beautiful backdrop for HCF's Annual Reception on 10 November 2021. The event was an opportunity to thank our supporters, to reflect on HCF's response to the pandemic (which saw the distribution of over £2m in funding) and to share our plans for the year ahead. Our thanks go to everyone who joined us and to the Holland-Hibbert's for hosting the event.

Creative fundraising

Local amateur photographers donated photos of Hertfordshire landscapes and landmarks to the Herts In Focus charity photo exhibition in support of HCF. Prints of the images, which showcased the beauty we enjoy in our county, were sold to raise funds to help grass root charities and voluntary groups in the county.

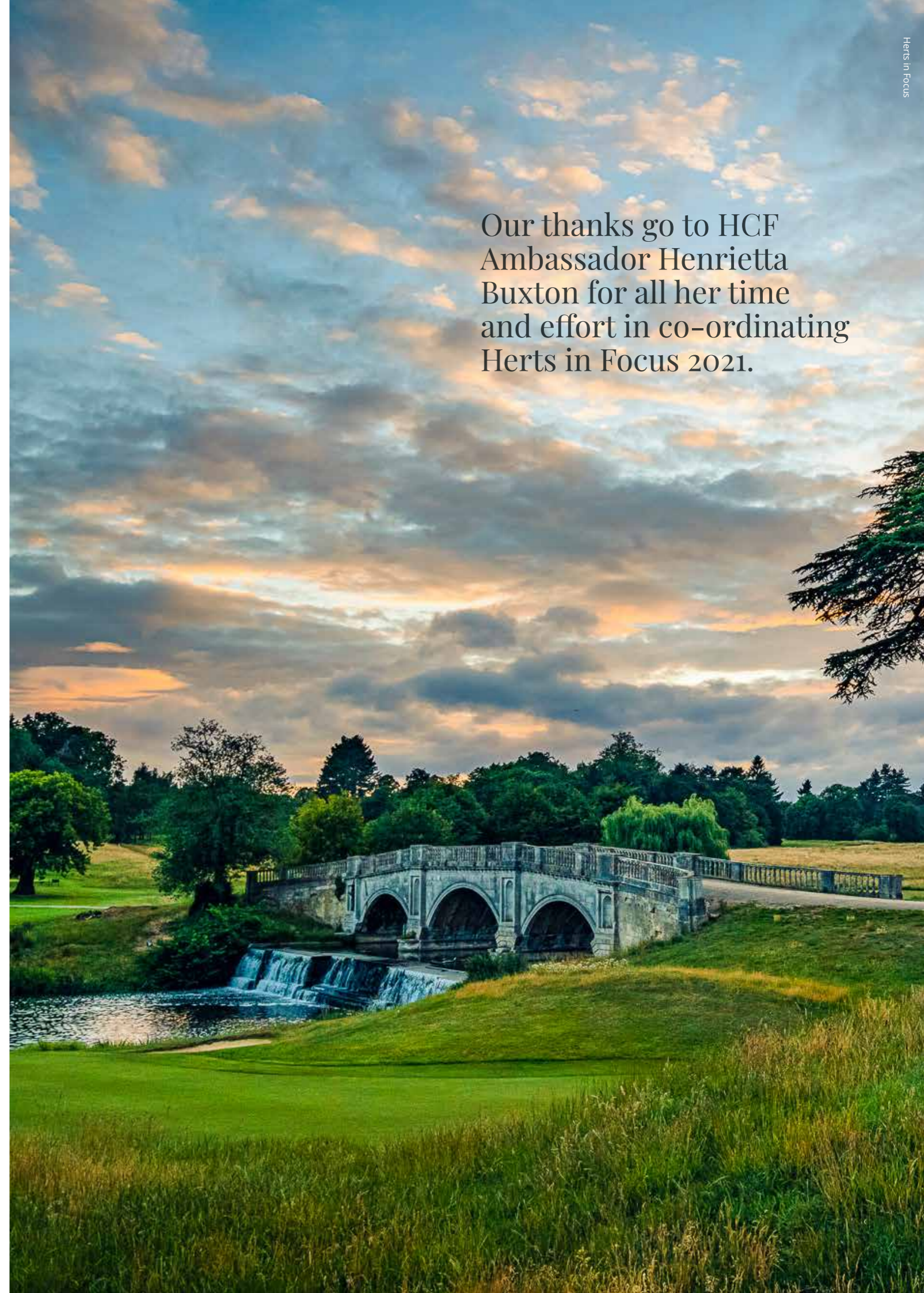
Our thanks go to HCF Ambassador Henrietta Buxton for all her time and effort in co-ordinating Herts in Focus 2021. To view and purchase photos in support of HCF please visit www.hertsinfocus.com.

Help this winter

Our 2021/22 winter appeal raised over **£16,900** to help local residents facing isolation, hunger or fuel poverty during the winter months. Donations included funds raised by Patrick Perry who donated the proceeds of an organic Christmas tree sale to the appeal. The 2022 Christmas tree sale will take place on the weekends of 3,4 and 10,11 December in Sacombe, Hertfordshire.

To find out more or to donate please get in touch. Further information can be found on our website and social media channels.

Our thanks go to HCF Ambassador Henrietta Buxton for all her time and effort in co-ordinating Herts in Focus 2021.



Looking back on 2021/2022 (continued)

High Sheriff Awards

On 10 March 2022, the 2021/22 High Sheriff of Hertfordshire, Lionel Wallace DL, publicly recognised and rewarded 13 Hertfordshire voluntary organisations at the 2022 High Sheriff Awards ceremony.



The Awards celebrated organisations which encourage opportunities for young people to advance and be community minded.

Walking together

On a bright, sunny spring morning in April over fifty walkers enjoyed a **4 mile** charity walk through farmlands in the Ash Valley in aid of HCF. The walk was kindly arranged and hosted by HCF Ambassador Henrietta Buxton helping to raise awareness of HCF's work in the county.



Charity spring walk in the Ash Valley

Time for lunch!

Over the past year HCF has hosted a series of philanthropy lunches for businesses, professional advisors and individuals wishing to find out more about HCF and the impact of local charitable giving. Thank you to all our hosts and attendees.

Should you or someone you know wish to attend or host a fundraising event in 2023/24. Please contact marketing@hertscf.org.uk to register your interest.



Tring Together Jubilee Weekend

Imagination Dance CIC deliver specialised, tailor-made dance sessions including wheelchair dance, dance for dementia and dance clubs in Primary and SEND schools



We're growing!

During the year we were delighted to establish two new endowment funds. The Beazley Family Fund and The Thomas Paine Fund.

The Beazley Family Fund was established by Sarah Beazley, an HCF Ambassador and former High Sheriff of Hertfordshire, with the involvement of her children in memory of her late husband Nicholas Beazley. Sarah was born and raised in Hertfordshire and has lived here for most of her adult life. When asked about why she chose to start a fund with HCF she said;

"There is much to celebrate in Hertfordshire - beautiful countryside and ancient forests, important and historic buildings, good transport links, thriving and prosperous towns, diverse faith and cultural communities, and above national average levels of education and employment.

Despite all the many positives in Hertfordshire, it is a county of contrasts and there are some real pockets of deprivation too. The numbers of those in need are growing. HCF helps match local giving with local need and is a great source of up to date and informed knowledge on where giving is most needed and can have the greatest impact.

The Beazley Family Fund is a way of giving in a sustained manner, year on year. Short term funding is a huge problem for small charities who have no regular sources of income on which to rely as they provide support for those in need. A well-managed fund will provide an income for grants in perpetuity. A family fund is a way of introducing a younger generation to local issues and local need as they become involved in decisions around how the income should be spent each year."

The vast majority of charitable giving goes to large national charities. Giving where you live and seeing firsthand the impact of that giving on local communities can be a very rewarding and worthwhile experience.

To find out more about setting up your own endowment fund please contact Amanda Jansen, Head of Philanthropy at amanda.jansen@hertscf.org.uk

Watford Walking Football support older people in the community with a focus on wellbeing and reducing loneliness.



Case studies

Sport and friendship

Watford Walking Football offers people of all abilities, aged 50 and over, a way to stay fit, socialize and have fun in a supportive environment. The club received a grant from the Friends of Bushey Senior Fund to fund life saving defibrillator equipment so that their members can enjoy all the benefits of the sport with added confidence that help is on hand.

Holiday fun and food

Hertfordshire County Council teamed up with HCF and Herts Sports Partnership to organise 'HAPpy' camps for school aged children in receipt of free school meals. The HAPpy programme tackles the triple inequalities facing Hertfordshire's most disadvantaged young people – holiday hunger, physical inactivity and social isolation.



Little Performers is one of the organisations that has run HAPpy camps since the programme started in 2021. With a focus on drama and music, attending children learn lines, make costumes and take part in nutritional education to encourage healthy eating.



Bringing people together

Watford Workshop provides paid employment, work experience and life skills training to adults with disabilities. Service users participate in a wide variety of tasks while gaining independence, confidence and employability. The group benefited from a 'Community Opportunities and Day Activities' grant, funded by Hertfordshire County Council Adult Care Services.

The programme aims to improve the lives of older people and adults with disabilities through community-based activities with a specific focus on preventing loneliness.

Ending isolation

Age Concern Bishop Stortford supports older people in the community with a focus on wellbeing and reducing loneliness. Recognizing the negative impact of the pandemic on older people the group received a pandemic recovery grant to continue helping older people, as well as to provide respite and support to carers.

Case studies (continued)

Unity through play

Sustainable St Albans Playing Out is an inclusive free community initiative which addresses isolation and helps to strengthen local communities one street at a time. During Playing Out sessions, children engage in free active play, adults meet new neighbours and the street community becomes more resilient.

HCF provided a grant towards core funding to ensure the project can continue for five years.



Sustainable St Albans Playing Out



Ngorli CIC

Tutoring support

Ngorli CIC supports students, particularly children of first-generation migrants, to increase their academic attainment and confidence through weekend tutoring sessions. A grant from HCF funded a 'Need to Read' programme to improve literacy skills among school children.

Pathways out of debt

Everyone is welcome and valued at the **Liberty Tearooms and Community Hub** in Hemel Hempstead. The 'pay what you can' tearooms provide help, encouragement and support to the local community by offering debt counselling, courses for budgeting and life skills. Vulnerable families can also access three-day packs of emergency food. A grant from HCF helped fund financial budgeting and insolvency services for local families in debt.

Making, mending and learning

The Repair Shed, managed by Community Action Dacorum, addresses loneliness and isolation in (mainly) men aged over 50 by giving them opportunities to work together on projects that support their local community. The giant bug hotel project brought together local vulnerable residents to create a long-term legacy that is a haven for insects and wildflowers.

An HCF grant of £5,000 helped the group to create a community garden and a giant bug hotel.



The Repair Shed

Case studies (continued)

Supporting families in crisis

HCF's Children's Fund provided over 202 grants to local families in crisis in 2021/22. Applications increased in number by over **30%** compared to the previous financial year illustrating the impact of both the pandemic and cost of living squeeze. Through applications from health and educational professionals HCF provides grants of up to **£300** to local families in need to purchase essential household items including children's beds, ovens, washing machines and fridges.

Thank you so much for helping this family, the child will no longer be sleeping on the floor, thank you.

This year's grant recipients included a young mother and her children who fled domestic violence, which the children witnessed. As a result of the trauma the children often wet their beds at night and had to sleep with their siblings or on the floor. An HCF grant meant the family were able to purchase mattress protectors and bedding which in turn helped them all to get a restful night's sleep.



Over 65's Cooking Club

Jubilee community celebrations

Her Majesty the Queen's Platinum Jubilee celebrations were a special moment in our collective history. The Let's Create Jubilee fund, a national programme funded by Arts Council England and the National Lottery, allowed HCF to provide grants to empower community organisations to work collaboratively with artists and cultural organisations to produce creative events. One such group was **Tring Together** which received a grant of **£5,225** to host a series of events and activities including art competitions, workshops for young musicians, and a community lunch for those unable to attend a street party - all aimed at bringing a sense of celebration to the community.



Tring Together



Liberty Tea Rooms & Community Hub

Why give through HCF

We live in an incredible county that offers many opportunities and is a great place to live and work. But Hertfordshire is also a county of contrasts.

Our Hertfordshire Matters research highlights that pockets of deprivation and social need exist in every borough.

The on-going impact of Covid-19 pandemic coupled with the cost-of-living crisis have put a huge strain on the sense of security and the mental well-being of many, but particularly people already living in hardship. There has never been a better time to consider supporting your local community.

At Hertfordshire Community Foundation we make local giving easy.

Small local charities and voluntary groups are at the heart of our communities. They have a deep and unrivalled understanding of the issues that they seek to address. Many are run by volunteers and, unlike larger charities, they have a limited ability to fundraise. Events over the past year have highlighted the invaluable contribution made by these groups and organisations to the county.

We know the local charities and groups in Hertfordshire and what they are capable of achieving with the right help. Together with our donors, we provide support to tackle the specific problems facing our communities to improve the lives of Hertfordshire's most vulnerable people. Every penny donated to Hertfordshire Community Foundation stays in Hertfordshire.



West Herts ABC

Our donors benefit from:

- Expert philanthropic advice to meet individual giving goals
- Access to specific local projects, causes and initiatives that match their areas of interest
- Expert knowledge of the needs of Hertfordshire communities
- End to end management of the grant making process
- Full due diligence and monitoring to ensure real impact

In addition to our grant making we also provide training and development opportunities to the local voluntary sector. This includes delivering training programmes to develop fundamental skills as well as mentoring and development programmes that support the longer-term development and sustainability of the sector.

For further information or to arrange an informal conversation please contact amanda.jansen@hertscf.org.uk



Friends of St Luke's School –
a Special Educational Needs
School for children with learning
disabilities and complex needs.

How to give

Charitable giving through HCF is one of the easiest ways to support causes that are close to your heart, in a way that suits you.

HCF looks after all the paperwork, takes care of the accounting and makes informed recommendations based on your giving requirements.



Support Love Herts

You can make one off or regular donations to the Love Herts appeal. This appeal pools together donations of all sizes to support a range of causes reflecting the needs of our county.



Become a Friend

By becoming a Friend of HCF your regular donations support small, grassroots community organisations that work hard to improve the quality of life for people across the county.



Set up a named fund

A fund in your name is a simple and effective alternative to setting up your own charity or trust. It gives you the opportunity to choose the cause and projects that you wish to support, with the support of local expertise to ensure that your giving is effective and used wisely.



Give online

Our online giving page is a quick and easy way to make a one-off donation or regular payment to HCF. To make an online donation simply visit www.hertscf.org.uk and click on the 'donate' button.



Provide sponsorship or in-kind support

Giving doesn't always have to involve making a financial contribution. Your time, skills or networks can all help the work we do.



Leave a gift in your will

Leaving a legacy in your will is a simple way to go on helping your community for generations to come. You may choose to allocate your gift to one of our existing funds or establish a named fund in your memory.



Trust transfers

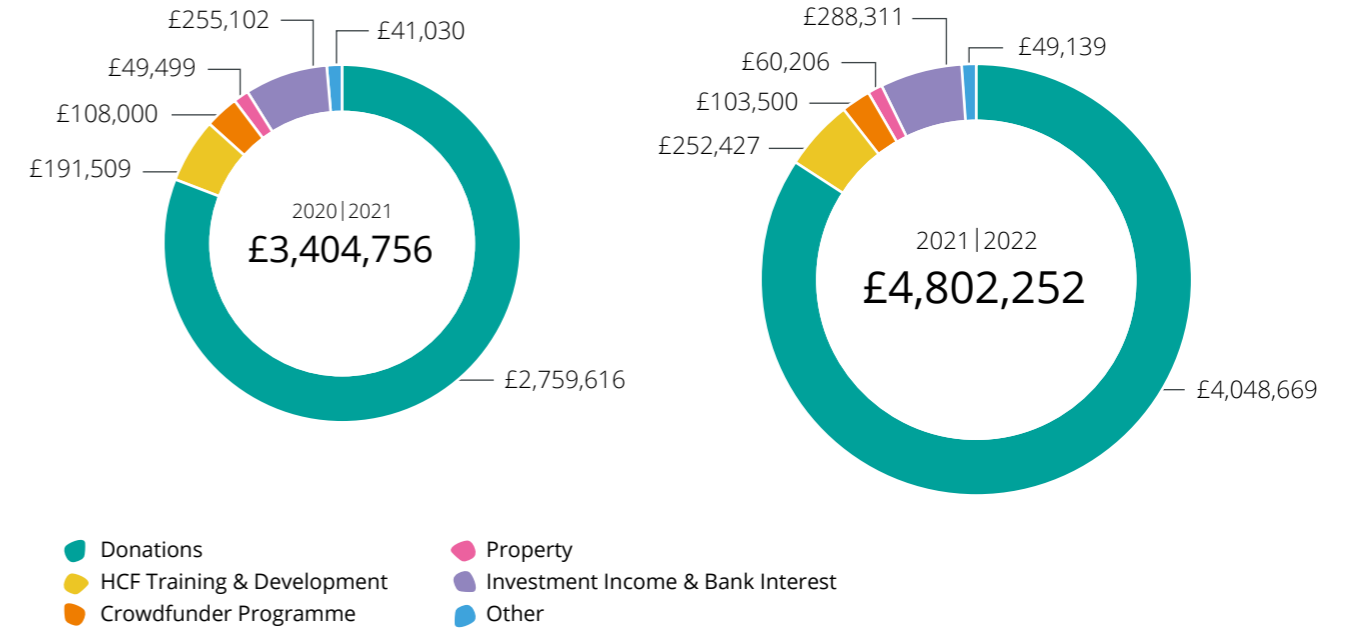
We work with charitable trusts to find solutions to help unlock dormant funds that have become inactive over the years.

HCF offers flexible and customised solutions for your charitable giving.

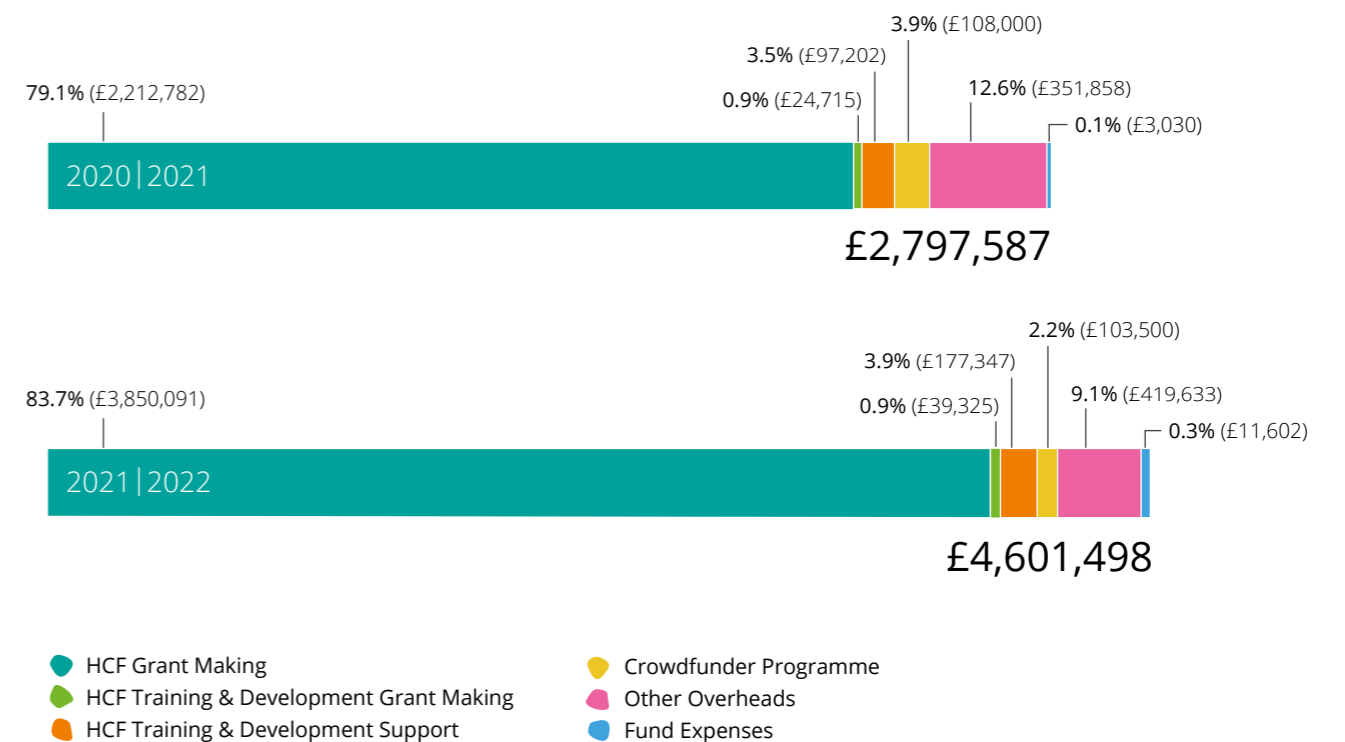
For further information please contact amanda.jansen@hertscf.org.uk

Financial overview

Income



Expenditure





West Herts ABC is a sport for good community fitness centre, encouraging young people to make positive choices through the provision of boxing and fitness training

With thanks to

Our donors

The generosity of our donors enables us to support local community groups working to change lives.

Thank you for the part you have played in strengthening our communities. Supporters during the financial year to 31 March 2022 include:

- Lawrence Alpren
- Jonathan Arrowsmith
- Austin's Family Funeral Directors
- Michael Baker
- Barclays Bank PLC
- Roger Barnes
- Bayford Parish Council
- Sarah Beazley
- Kate Belinis
- N Bennett
- Phil Bibby
- Colin Birss
- David Blake
- Harry Bott
- Eric Bridgstock
- Andrew Brown
- Jill Burridge
- Mark Burton
- Sally Burton
- Frances Button
- Henrietta Buxton
- Gillian Bywaters
- The late Nancy A Campbell
- David Cansdale
- Hugo Cardale
- CBRE UK Charitable Trust
- Charles Cecil
- Karen Cherry
- Paul Cherry
- Alan Clarke
- R Cobham
- Keith Cockman
- A M Cooke
- Dagnall Street Baptist Church
- John Darling
- Phillipa Davies
- Vincent Davies
- Edge Grove School
- Richard Elliott
- Roland Everington
- Andrew Every
- Ian Ross Farnsworth
- Louisa Faure Walker
- John Fearon
- Patrick Fields
- Stanley Fisher
- Kevin R Fitzgerald
- Judith Flannery
- Fleetville Larder Café
- Cynthia Fletcher
- Liz Fraser
- Sarah Free
- Gerald Freedman
- Rosemary French
- Sue Friend
- David Fryer
- Suzanne Gadd
- Tony & Pauline Gilbert
- Stephen Giles-Medhurst
- Giving Force Foundation
- Susie Gordon
- Marilyn Goreham
- Judith Gower
- Alexander Graham
- Emma Graham
- Christopher Gray
- Elizabeth Green
- Nicholas Halsey
- Stephen Hammersley
- Bryan Hammond
- Damien Hanbury
- Suzy Harvey
- Michael Hastings
- Linda Hays
- Richard Heighton
- Teresa Heritage
- Hertfordshire Constabulary
- Hertfordshire County Council
- Hilary House
- Philip Hinchliff
- Hitchin Lodge
- Will Hobhouse
- Henry Holland-Hibbert
- Homewood Road United Reformed Church
- Sarah Hopkin
- Dominic Hopkins
- James Hopkins
- Keith Howard
- Stephen Irwin
- JPA Workspaces
- Michael Ketley
- Tony Kingsbury
- David Kirk
- David Kitson
- Michael Knibb
- Dawid & Rachel Konotey-Ahulu
- Christopher Laing
- William Herbert Laming
- Morris Le Fleming
- Andrew Leach
- Chris Lloyd
- David Lloyd
- Anthony Lovat
- Susanna Lyell
- Sandra Lynch
- Ian Magnus
- Louise Marron
- Johanna Mason
- Mike Master
- Caroline McCaffrey
- Wayne McDonald
- David McMullen
- Christopher B Melliush
- Mercer & Hole Chartered Accountants
- Penelope Meredith-Hardy
- Tom Morkill
- Paul Morris
- Nicholas Moss
- Myers Clark Chartered Accountants
- Stuart Nagler
- NeoOptic
- Joan Newman

With thanks to (continued)

- Thomas Oliver LLP
- Opro International
- John Palmer
- Jennifer NB Parker
- Ann Parkinson
- B Peacock
- Dorothy Pears
- Patrick Perry
- John Peters
- Louisa Piercy
- Alexander Pool
- Matthew Powlesland
- Nick Powlesland
- Quartet Community Foundation
- F A Quinton
- Radlett District Guides
- Reward Gateway
- Right Angle Creative
- The late Dorothy Riley
- RO Group
- Richard Roberts
- Michael & Diana Rose
- Edward Rowlandson
- Richard Rowlandson
- Marquess of Salisbury
- John Saner
- Charles Sherwood
- Kelvin Southgate
- St Albans & South Herts Co-Operative Party
- Joanna Staughton
- James Steel
- The late Eric Stockdale
- Jeremy Stuart-Smith
- Allen Takawira
- Melvyn Thomas
- Tess Thorpe
- B & SP Towns
- Hugh Trenchard
- Tring Park School for the Performing Arts
- Trotts Hill Primary School & Nursery
- Nigel Tully
- Maggie Turner
- UK Community Foundations
- Dione Verulam
- Virgin Money
- Robert Voss
- Waitrose (Berkhamsted)
- Stephen & Vanessa Walduck
- Philip Waller
- Mark Watkin
- John & Sue Weeks
- Welwyn Garden City United Reformed Church
- Janie Wentworth-Stanley
- Graham Westwell
- Mike Whittles
- Michael Whyman
- Caroline Wigin
- Paul Williams
- Penny Williams
- Carr Withall
- P M Wright
- Diana Wrigley
- Paul Zukowskyj

Ambassadors

- Claire Austin
- Michael Baker
- Sarah Beazley
- Kate Belinis
- Simon Bowes Lyon
- Henrietta Buxton
- David Cansdale
- Charles Cecil
- Paul Cherry
- Jo Connell
- Gerald Corbett
- John Fearon
- Sarah Free
- Tony Gilbert
- Jane Gray
- Elizabeth Green
- Neil Hayes
- Malcolm King
- David Kirk
- Briege Leahy
- Chris Luff
- Mike Master
- Fergus J McMullen
- Syd Nadim
- Stuart Nagler
- John Palmer
- Richard Roberts
- Edward Rowlandson
- Joanna Staughton
- Fiona Trenchard
- Janie Wentworth-Stanley
- Penny Williams

Charitable trusts

- Blandford Trust
- Burton Charitable Trust
- Chaldean Charitable Trust
- Connell Trust Fund
- Cosaraf Charitable Foundation
- David & Jennie Kirk Charitable Trust
- David Wentworth-Stanley Charitable Trust
- Donald Byford D Charitable Trust
- Frank Litchfield Trust
- Graham Rowlandson Foundation
- Harpenden Building Society Charitable Trust
- Laing Family Trusts
- Macs Hart Trust
- Masonic Charitable Foundation
- Sylvia Adams Charitable Trust
- The Antony Hornby Charitable Trust

With thanks to (continued)

Fundholders

- Affinity Water Fund
- Alphonse Fund
- Arrowsmith Family Fund
- Austin Fund
- Beazley Family Fund
- Bishop's Stortford Hospitals League of Friends Fund
- Blandford Trust Fund
- Britvic Fund
- Bryan Family Fund
- Bryan Newman Fund
- Burton Communities Fund
- Buxton Family Fund
- Cereal Partners Fund
- Charles Forster Legacy Fund
- Chauncy Charity Fund
- Chris & Fiona Grigg Fund
- Cogs Trust Fund
- Connell Family Fund
- Corbett Family Fund
- COSARAF Fund
- Dacorum Community Trust Fund
- David Laing Family Fund
- David Poutney Fund
- East Herts Community Chest Fund
- Elliston Family Fund
- Fearon Family Fund
- Frank Litchfield Fund
- Friends of Bushey Seniors Fund
- Go4it Fund
- GPW & SKW Fund
- Graham Rowlandson Fund
- Great Munden Fund
- Griffin Family Fund
- Hadley Trust Fund
- Harpenden Building Society Fund
- Harpenden Music Foundation Fund
- Hertfordshire Children's Fund
- Herts in Trust Fund
- High Sheriff's Fund
- Howard Fund
- Hulm Woolcott Fund
- John Groom Fund
- Keith Cockman Fund
- Matt Scales Fund for Aspiring Musicians
- Myers Clark Fund
- Nigel Copping Fund
- Oaken Fund
- Office of the Police and Crime Commissioner for Hertfordshire
- Pamela Reed Fund
- Paul Morris OBE Hertsmere Community Fund
- Peter Woodpecker Trust Fund
- Price Waterhouse Coopers Fund
- Quercus Fund
- Richard Heighton Fund
- Robert Gordon Fund
- Ron Groves Memorial Revenue Fund
- Savage Family Fund
- Segro Fund
- Shredded Wheat Sports & Community Fund
- St Albans Fund For The Future
- St Albans Mayor's Bursary Fund
- Stefanou Foundation Fund
- Stevenage Community Trust Fund
- Sue and Dave Smith Fund
- The 3T's Family Fund
- Tilley Family Fund
- Trenchard Family Fund
- Trower Family Fund
- Watford Football Club Charity Fund
- Wendy Thomas Youth Development Endowment Fund
- Wooden Spoon Fund

2021 London Marathon runners

- Mark Fearon
- Emma Graham
- Chris Gray
- Bren Hester
- Sandra Lynch
- Wayne McDonald
- Louisa Piercy
- Kelvin Southgate
- Allen Takawira

Virtual runners

- Louise Marron
- Claire Marron
- Nick Powlesland
- Matt Powlesland

Our people

President | Robert Voss CBE, CSTJ,
Lord-Lieutenant of Hertfordshire

Patron

The Countess of Verulam

Trustees

Henry Holland-Hibbert
Jonathan Arrowsmith
Anna Bates
Sally Burton DL
Jill Burrige
Cllr Terry Douris
Suzy Harvey DL
Will Hobhouse
Gus Machado
John Saner
Simon Tilley
Suzanne Westlake
James Williams MBE

Volunteers

Our activities are enhanced by the help of volunteers for which we are hugely grateful, We would especially like to thank:

- Henrietta Buxton
- Nick Powlesland
- Emma Simons
- Alex Wiltshire

Staff

Georgina Bawden - Grants Manager
Emma Dalton - HAPpy Training & Grants Administrator
Ingrid Dos Santos - Office Manager
Helen Doubal - Head of Grants
Helen Gray - Foundation Director
Yvonne Green - Marketing & Events Co-ordinator - Training & Development
Danielle Hood - Marketing Officer
Willow Humphreys - Project Manager - Training & Development
Amanda Jansen - Head of Philanthropy
Toni Kitchingman - Grants Manager - Community Opportunities
Linn Moyster - Finance Manager
Maureen Palmer - Grants Coordinator
Ana Siewniak - Project Officer - Training & Development
Nicola Stokes - Grants Manager - Major Donors
Christy Winn - Grants Administrator

All staff work part-time with the exception of HCF's Finance Manager.

Accreditation





**Hertfordshire
Community
Foundation**

Hertfordshire Community Foundation
Foundation House, 2-4 Forum Place,
Fiddlebridge Lane, Hatfield, Hertfordshire
AL10 0RN

T: 01707 251351

E: office@hertscf.org.uk

W: www.hertscf.org.uk

Company registration No: 08794474
Charity No: 1156082